



JULIE NOTES

The Illinois One-Call System

Volume 16/Fall 2002

NEW LAW TAKES EFFECT

JULIE Membership Exceeds 1,300; Web Sites Provide Assistance

After coordinating a proactive outreach program to inform and educate JULIE members and the excavation community, new amendatory language to the Illinois Underground Utility Facilities Damage Prevention Act took effect on July 1, 2002.

"We have attended a record number of safety meetings at member and contractor companies to discuss the new law and answer questions," said **Mark A. Frost**, executive director of JULIE, Inc. "At each meeting, we stress the importance of safe-digging practices and address misconceptions. As we move forward, we will continue our focus on damage prevention and ongoing communications with our members, excavators, the Illinois Commerce Commission and various state associations and organizations."

In addition, over 350 municipalities and other owners and operators of underground facilities have already joined JULIE this year, bringing total membership to over 1,300.

ICC Enforcement Process Update

According to the Illinois Commerce

Commission (ICC), from July 1 through October 2002 there were over 140 incident reports submitted to the JULIE Enforcement Program staff. Of these incidents, a majority were reported by utilities.

Bill Riley, manager of JULIE Enforcement for the ICC, recently provided several "lessons learned" tips to members and contractors attending a safety meeting and exposition in Grayslake:

- ◆ Call JULIE for a locate for everything.
- ◆ Wait 48 hours before digging.
- ◆ Dig carefully--be prepared to explain excavation procedures in the tolerance zone.
- ◆ Call utilities in advance of large projects or when you may be calling in a lot of locates at one time.
- ◆ Communication is essential. If utilities are not locating on time--call them directly before you file an incident report.

General questions about the process can be directed to the ICC at 217/782-5911. Specific information about potential penalties, the enforcement process and copies of incident report forms are available at the ICC's JULIE Enforcement Web Site (eweb.icc.state.il.us/julie/). More information, including a link to the ICC site and full text of the legislation is available at JULIE's Web site (www.julie1call.com).

DID YOU KNOW?

- According to the Illinois Underground Utility Facilities Damage Prevention Act (Section 7), in the event of any damage to or dislocation of any underground utility facilities or community antenna television system (CATS) facilities in connection with any excavation or demolition, emergency or nonemergency, the person responsible for the excavation or demolition operations shall immediately notify the affected utility **and** the Illinois One-Call System.
- As provided by Section 3 of this Act, all owners and managers who fail to join the State-Wide One-Call Notice System by **January 1, 2003** shall be subject to a penalty of \$100 per day for each separate offense. Every day an owner or operator fails to join the State-Wide One-Call Notice System is considered a separate offense.

ICC Names Advisory Committee Members

The ICC announced the following people will serve on their Advisory Committee: **Mark Frost**, JULIE, Inc., **Dennis York**, Village of Skokie, **Dale Olthoff**, Olthoff Construction, **Joseph Garrity**, Geneseo Telephone Company and **Bill Dickson**, general public.

Task Force to Review Joint Meet Process

The JULIE Board of Directors recently appointed a task force of excavator and utility representatives to review the joint meet request process and to submit recommendations to the Operations Committee next year.

The decision to form the task force came after the JULIE Board realized that there have been no changes or modifications to the joint meet request process since it was first implemented several years ago.

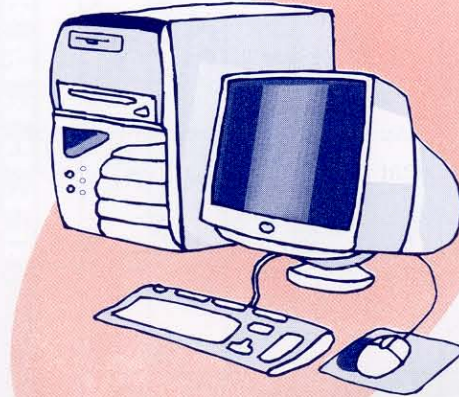
A joint meet is scheduled when the extent of the work may be confusing or extends over a large geographic area and it may be helpful to distribute maps, plans, schedules or openly discuss the project.

What are Reasonable Business Practices?

According to Section 10 of the JULIE law, all persons subject to the requirements of the Act shall plan and conduct their work consistent with reasonable business practices. Conditions may exist making it unreasonable to request that location be marked within 48 hours. It is unreasonable to request owners and operators of underground utility facilities to locate all of their facilities in an affected area upon short notice in advance of a large or extensive nonemergency project, or to request extensive locates in excess of a reasonable excavation or demolition work schedule, or to request locates under conditions where a repeat request is likely to be made because of the passage of time or adverse job conditions.

Offsite Computer System Provides Uninterrupted Service

The JULIE Board of Directors approved the purchase of OCARS Gemini from Norfield Data Products as a solution to our members' desire to address the issue of continuity of service in an emergency.



OCARS Gemini is the latest breakthrough for the one-call industry. The concept calls for two identical computer systems in separate locations. Each system will be live, with locate requests being taken on and delivered from concurrently. Operators with access to the Internet, whether working remotely from home, the call center or another emergency back-up facility can be configured to connect to either

system. Excavators using Web ticket entry will be equally split, automatically, between the two online systems. Each system will be configured with a unique set of outbound delivery devices (i.e. modems and fax machines) that will deliver tickets to JULIE members. The system is expected to be operational within 60 days.

This solution provides uninterrupted JULIE service in the event of a disruption at one of the sites. Disruptions could include computer system failure, power failure, telephone system failure, Internet service interruption or natural disaster such as fire, lightning or tornado. In such an event, all operators having access to the Internet, whether they are working from home or another facility, can quickly and easily use the remaining online system to enter locates. All Web ticket users would automatically post their locates to the remaining system.

The WRTE Way

Are you looking for a fast and easy way to process a locate request during the busy season?

A record number of contractors now enter their own locate request tickets. Web Remote Ticket Entry (WRTE) is a free of charge, unique feature that provides excavators with a method of entering locate requests directly into the JULIE system via an Internet Web site from the convenience of their own office. Using WRTE also enables you to print a copy of your request for future reference, if desired. All WRTE requests are available online to that excavator for a period of four months. Training is required by JULIE staff at no cost to your company. For additional information, contact the Data Department at 815/741-5011.

Safety Meetings Explain The Importance of the JULIE System and One-Call Issues

Twenty-one excavator safety meetings, hosted by JULIE, Inc. and its members, will once again be held across the state of Illinois this winter. These safety meetings are designed to address misconceptions and frequently asked questions about the new law and policies, to increase excavator awareness of the underground utility dangers that exist and to encourage the continued use of Illinois' utility notification system prior to the start of any project involving digging. Representatives from all the key groups involved in damage prevention will be brought together to discuss the latest issues and challenges. In addition, a special guest speaker, Mike

Parilac of Planet Underground, will talk about locating standards.

In addition to a few new locations (and the elimination of others) designed to address the expected increase in the number of attendees in different regions, there are also new registration guidelines. Due to a significant increase in the number of attendees last year (and a high number of no shows), excavators interested in attending one of the meetings are encouraged to register as soon as possible via the JULIE Web site.

Seating is limited at all locations-no walk-in attendees will be accepted.

FIELD LIAISONS AVAILABLE FOR MEETINGS

JULIE's Field Liaisons can bring safety presentations directly to you and your coworkers. Our Field Liaisons work to promote public awareness and education concerning the use of the JULIE system and changes in the law and policies.

Do you have a problem or question about locating? There is no reason to wait until the busy dig season. Please feel free to contact either of JULIE's

Field Liaisons with any questions, concerns and/or comments. In addition, several of our member companies, including ComEd, Nicor Gas and Ameritech, now have damage prevention contacts available to attend safety presentations and to assist you with specific questions about locating procedures and other issues. More information, including a list of contact phone numbers, is available at www.julie1call.com.



Central/Southern Illinois
Raymond Muhs
618/662-2118 (office)
618/843-2513 (cell)

Northern Illinois
David Van Wy
847/635-7992 (office)
815/351-5002 (cell)

2003 Excavator Safety Meeting Dates

- 1/08 **Bradley**
Quality Inn & Suites
- 1/09 **Olney**
Ty's Family Restaurant
- 1/10 **Grayslake**
Country Squire Restaurant
- 1/15 **Effingham**
Knights of Columbus Hall
- 1/16 **Streamwood**
The Seville
- 1/17 **Quincy**
Holiday Inn
- 1/22 **Rock Falls**
Holiday Inn
- 1/23 **Marion**
Knights of Columbus Hall
- 1/24 **Moline**
The Mark of the Quad Cities
- 1/29 **Mt. Vernon**
Holiday Inn
- 1/31 **Urbana**
Holiday Inn
- 2/06 **Decatur**
Holiday Inn
- 2/11 **Alton**
Holiday Inn
- 2/12 **Matteson**
Holiday Inn
- 2/13 **Springfield**
Crowne Plaza Hotel
- 2/18 **Elmhurst**
Diplomat West
- 2/19 **Willowbrook**
Ashton Place
- 2/21 **Morton**
Ashland House
- 2/26 **Morris (Joliet)**
Jennifers Garden
- 2/27 **Collinsville**
Holiday Inn

MARK YOUR CALENDAR- Damage Prevention Event Coming to Manteno in Summer '03

Underground Focus Live is a new and innovative event that will take place July 23-24, 2003, in Manteno, Illinois. The show will feature the most advanced products and techniques utilized in the damage prevention industry. For more information about demonstrating or attending the event, call 866/279-7755.

New Excavator Handbooks Available

The latest edition of the JULIE Excavator Handbook with the full text of the new law is now available.

In addition, JULIE offers other free materials to excavators that make using the One-Call System easier.

Items such as the Locate Request Form streamline the calling process by outlining all the information you need to make your call to JULIE. Color code stickers explain the different APWA approved colors used by the various utilities to mark their facilities. Vinyl bumper and equipment stickers can be affixed to vehicles and equipment displaying a warning to call JULIE before digging.

Please visit our Web site at www.julie1call.com to order free

materials or download available items. You may also contact the Public Relations Department at 815/741-5000 to request materials.



ON-LINE WITH JULIE

JULIE has an easy to remember Web site address—either www.julie1call.com or www.julieonecall.com.

Many new benefits include:

- ◆ Full text of new legislation
- ◆ JULIE policies
- ◆ ICC enforcement process link
- ◆ Utility company contacts
- ◆ Upcoming events
- ◆ Safety meeting registration
- ◆ Frequently asked questions
- ◆ Free safety materials
- ◆ JULIE staff directory

For the latest information, bookmark and visit our site on a regular basis.

www.julie1call.com