



B · R · E · A · K · I · N · G

# New Ground

Summer  
2005

## STAKEHOLDERS DIG NEW LAW CHANGES

After a series of meetings during the past few months, amendatory language to the Illinois Underground Utility Facilities Damage Prevention Act was created in a cooperative spirit with various stakeholders and approved unanimously by members of the Illinois General Assembly this spring.

“At the organization’s strategic retreat and subsequent planning sessions, the JULIE Board of Directors and staff reviewed and discussed several major issues that impact our members and excavators throughout the state of Illinois,” said **Mark Frost**, executive director of JULIE, Inc. “Based upon the input of our members, we were able to work closely with representatives from a variety of statewide groups and organizations and build a consensus on a number of these important issues. The sponsors of the bills, **State Senator Arthur Wilhelmi** and **State Representatives Jack McGuire and Patrick Verschoore** were instrumental in the success of this endeavor.”

The following is a brief synopsis of the changes to the Act, effective upon the signature of the Governor this summer:

- Excludes “roadway surface milling” from the definition of excavation (Section 2.3).
- Codifies the current practice of recognizing the 48 hour advance notification as Monday through Friday, beginning at 8:00 a.m. and ending at 4 p.m. (exclusive of Saturdays, Sundays, and holidays recognized by the State-Wide One-Call Notice System or the municipal one-call notice system). All requests for locates received after 4 p.m. will be processed as if received at 8 a.m. the next business day (Section 2.9).
- Defines and establishes an “open cut” utility locate (Section 2.10).
- Defines roadway surface milling (Section 2.11).
- Defines requirement for underground facility owners and operators to respond within two hours to an emergency request (Section 6).
- Clarifies which colors are reserved for marking utilities and those reserved for excavator use to pre-mark and/or survey a site (Section 10); and
- Clarifies the historical component of the penalty phase to be 18 months from the previous incident; Adds a penalty phase for failure to comply with Section 6 (Section 11).

All changes will be reflected in the next version of the excavator handbook later this year. In the meantime, for the latest news and a complete copy of the law, visit the JULIE Web site today.

## JULIE OFFERS NEW MEMBER SERVICE

As a result of recently enacted federal requirements, JULIE, Inc. has received an increase in requests from its members to assist in providing names and addresses of excavators who work in their service areas. In the past, JULIE was able to assist with such requests in a limited capacity. In our continued effort to provide new services to benefit our members, JULIE staff worked with Norfield Data Products, Inc. programmers to produce the results needed to satisfy these new requirements.

Essentially, JULIE members may order excavator company and contact information based on user selectable criteria. Such selections include date range, county, caller type (i.e. contractor, homeowner, utility), and service area by member code. Those members’ tickets are scanned from the specified time period, capturing the caller information from tickets that match the desired criteria. The report can be generated as a formatted list or as a delimited text file, capable of being imported and manipulated. This report can be either e-mailed directly to the member or copied to some form of media and mailed.

A small fee to cover development costs and preparation time is charged for the address generation service. Requests resulting in less than 1,000 addresses will be charged \$50 per request. Reports producing over 1,000 contacts will be billed at a rate of \$100. Members wanting to order the company and address report for excavators in their service territory can contact **Greg Fisch**, JULIE, Inc. Director of Computer Operations, at 815-741-5003.

# 2005-06 JULIE BOARD OF DIRECTORS AND OFFICERS

## **Board President**

Tom Stutzman ComEd

## **Board of Directors**

Gary Stewart Trunkline Gas

Gene Barney Leaf River Telephone

Chuck Mueller AmerenIP

Steve Meyer City of Aurora

Roger Watwood City of Marshall

Jan Modaff Nicor Gas

Kim Favero Petersburg Plumbing and Heating

George Golus Comcast

Steve Fletcher Washington County Water

Dave Conover SBC

## **Vice Presidents**

Art Kraus Kraus Cable

Tom Meyer Greater Peoria Sanitary District

Gary Klein Laser Construction

Gina Fouts AmerenCIPS/ AmerenUE

John Pruden City of Salem

Roger Baldwin Verizon

Tom Hobson Marathon Ashland Pipeline

David Spall BP Pipelines Inc.

Steve Graceffa Rock River Water Reclamation District

Bill Lincoln Retired

## **Treasurer**

Kent Kowalske AmerenCILCO

## **Secretary**

Fred Kreinbrink City of Naperville

# quick digs



## *Get the Clubs Ready*

Mark your calendars and get your clubs ready for another fun outing this summer. JULIE, Inc. will hold its annual golf outing at the Links of Carillon in Plainfield, Illinois on July 22, 2005. A special thanks to the Underground Contractors Association for sponsoring our lunch and reception after the outing.

Because of an early kick-off this year, the summer Board meeting will be held during the evening of July 21. Look for more details in the mail very soon.



## *New Campaign Reaches Statewide Audience*

During the spring, representatives of JULIE, Inc. announced the kick-off of a statewide public safety campaign that stresses the importance of calling the one-call system before starting any digging projects. In addition to on-camera and statewide radio interviews with JULIE staff, the media mix includes new television and radio commercials, public service announcements and outdoor advertising.

We are proud to announce that several members are using the 30-second commercial as a Public Service Announcement—call **Barb Huff**, public relations manager, for details at 815-741-5936. The television commercials are available to view on our Web site.

## *What a Month!*

The Illinois One-Call System reached several milestones in May. JULIE, Inc. received and processed a single day record of 7,667 locate requests on May 31, 2005. During the month of May alone, 137,412 locate requests were received and processed, a seven percent increase compared to the previous year. During this same month, 884,535 messages were sent to members.

## *Auto Rental Plan*

### *Extended to Members*

Member representatives can now use JULIE's corporate account with Enterprise Rent-a-Car to secure a rental car at a discounted rate. The process is easy—just call your local Enterprise office or visit [www.enterprise.com](http://www.enterprise.com) and provide JULIE's account number (15D6506) and provide the necessary insurance and other details.

## *Safety Materials Available at the Right Price*

Free safety and education materials are available for safety meetings, events and other activities. For a complete list of materials and other resources, visit [www.illinois1call.com](http://www.illinois1call.com) (under Free Materials). At the site, you can either 1) order directly online or 2) print out an order form that you can complete and fax back to JULIE, Inc. If you do not have access to JULIE's Web site, please call the Public Relations Department at 815-741-5000.



## *DPC*

### *Conference Moves to Houston*

The 8th annual Damage Prevention Conference & Exposition (DPC) is scheduled for December 6-8, 2005 in Houston, Texas. The 2005 DPC and co-located Subsurface Solutions Conference & Expo (SSCE) exhibit hall will give attendees the opportunity to see new products and services, find new suppliers and compare offerings from leading manufacturers. For more information and to register, visit [www.damageprevention.com](http://www.damageprevention.com) or call 800-827-8009.

# AN ALLIANCE WHERE EVERYONE WINS

JULIE, Inc., the State of Illinois Onsite Safety and Health Consultation Program and the Occupational Safety and Health Administration (OSHA) recently announced the establishment of a collaborative relationship to foster safer and healthier workplaces in the state of Illinois.

At a June signing ceremony held in Joliet, Executive Director **Mark Frost** said, “This collaboration helps JULIE, Inc. to build trusting, cooperative relationships with the agency, network with other groups committed to workplace safety and health, leverage resources to maximize worker safety and health protection and gain recognition as a proactive leader.”

JULIE staff will work together with OSHA to provide expertise to develop training and education programs for underground and trenching contractors, subcontractors and other target audience members. The alliance also provides outreach and communication and promotes national dialogue on workplace safety and health, particularly in reducing and preventing exposure to underground utility hazards and related issues.



# STUTZMAN ELECTED BOARD PRESIDENT

Representatives of JULIE, Inc. announced recently that **Tom Stutzman**, damage prevention manager at ComEd, was unanimously elected as Board President of the not-for-profit organization.

“As one of the largest industry one-call centers in the nation, we are excited about Mr. Stutzman’s strong vision for the future of our organization,” said **Mark Frost**. “He has extensive public safety and underground damage prevention experience along with a proven ability to work with various stakeholders.”

During this meeting, Frost highlighted the accomplishments of the organization and several additional Board appointments were approved (for a complete list of Board members, see page 2). A complete summary of the major issues discussed during this meeting was sent to member coordinators in May.



*Fighting Illini Coach Bruce Weber provided his insights for a successful team during his presentation at the annual meeting.*



## SAFETY FIRST

*Left to right: Scott DeRoss, village of Brookfield, Dave Van Wy, JULIE, Inc., and Prezel Hardy, city of Elgin, discuss the JULIE system at the recent APWA Conference and Expo. in Villa Park, Illinois.*



*Mark Frost highlights several major accomplishments in Springfield.*

# SAFETY TRAINING APPROVED BY IEPA

JULIE, Inc. recently announced that the Illinois Environmental Protection Agency (IEPA), Bureau of Water, has approved two education courses for drinking water license certification renewal credits.

"We are very pleased that the IEPA recognizes the important role excavation safety plays in providing safe and reliable water supplies to Illinois citizens. We are excited to include the IEPA as another partner in our damage prevention efforts across the state and look forward to providing educational opportunities for Illinois water operators," said **Kevin Chmura**, director

of public relations at JULIE, Inc.

"Overview of the JULIE System" and "Partners in Damage Prevention" are both one hour education sessions offered by the Public Relations Department that are pre-approved by IEPA for drinking water license certification renewal credits. Attendance at any of the excavator safety presentations hosted by the Illinois One-Call System is also included.

Water operators need to submit an Operator Training Submission Form to IEPA. This form may be submitted at

any time during their required renewal cycle. Jewel Brant, IEPA Acting Program Coordinator stated, "Excavating safely is an important part of maintaining the integrity of underground drinking water facilities and we thank JULIE, Inc. for providing this important drinking water related training."

Any JULIE, Inc. member interested in on-site presentations which qualify for IEPA water license renewal credits should contact a damage prevention manager directly or request a presentation on-line at [www.illinois1call.com](http://www.illinois1call.com).

## WELCOME NEW MEMBERS:

**Wabash Independent Networks, Inc.; Oraville Water District; University of Illinois; Van Orin Water Company; Farmers Mutual Electric Company and Northwestern University.**

## ON THE ROAD TO SAFETY

JULIE's Damage Prevention Managers have been visiting with member coordinators and gathering excellent feedback about the one-call process and other issues. Several coordinators discussed the importance of locating underground facilities and inquired about locate training options in the state.

### *Locate Training in the Field*

As a result of this feedback, JULIE, Inc. formed a partnership with Staking University to provide one-day training courses for our members throughout the state. As the sponsor of the sessions, JULIE, Inc. covers the costs of the hands-on seminars and our member representatives are only responsible for a nominal registration fee. The maximum class size is 20 people per site.

Workshops are conducted by professional instructors from Staking University and continuing Education Credits and Water Operators License Renewal Credits are available. Staking University's flagship facility is The Planet Underground owned by **Mike Parilac**, located just south of Chicago in Manteno, Illinois. For more information about other services and opportunities at this site, visit [www.theplanetunderground.com](http://www.theplanetunderground.com).

Several training sessions have already taken place this spring in Southern Illinois. An Illinois telephone representative that recently participated in a workshop said, "Thank you for opening our minds to a better way of locating. After being with my company for more than 30 years, I and others in my class wondered what you (Staking University) could show us about locating. By sharing your knowledge of different locate equipment types and correct practices, we all

learned new ideas in locating and have more confidence in ourselves."

If you are interested in hosting a JULIE-sponsored, one-day training course at your site for your company/municipality and other member representatives from the area and/or would like to know if a workshop will be held in your county this year, please call a JULIE Damage Prevention Manager. A limited number of training workshops will be held this year. These managers can also schedule a coordinator visit and answer questions about the state law and other issues.

### *Damage Prevention Managers by Region:*

- Northern Illinois, **Dave Van Wy**, 847-963-0387 (office), 815-351-5002 (cell)
- Central Illinois, **Dale Kuhn**, 217-698-0813 (office), 217-725-0904 (cell)
- Southern Illinois, **Raymond Muhs**, 618-662-2118 (office), 618-843-2513 (cell)



# IDM MAP VIEWER PRODUCT TAILORED FOR ILLINOIS EXCAVATORS

Innovative Data Management, Inc., a damage prevention services company in Maitland, Florida, recently released the initial version of its Map Viewer program for the State of Illinois. During the development of this product, IDM programmers consulted with JULIE staff to gain insight into features and functionalities that would be useful and valuable for excavators in Illinois. JULIE staff evaluated the product and determined that it can be a helpful tool for JULIE callers who need to find or confirm required geographical information prior to placing a locate request.

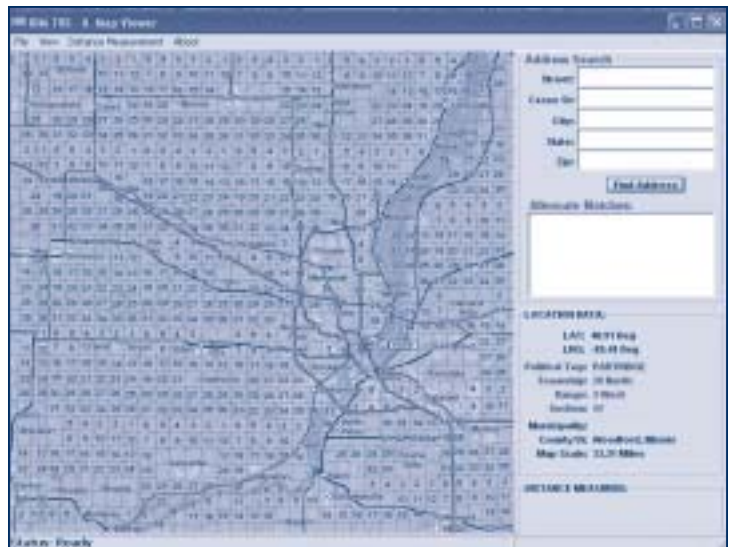
Some of the key features of the Illinois Map Viewer include:

- Search for and display an area map based on street address and GPS.
- Identifies the tier, range, and section of a point on the map.
- Identifies the municipality or political township of a point on the map.
- Contains overlays of Illinois section lines.
- Contains overlays of municipal boundaries.
- Ability to increase or decrease map view area using ZOOM feature.
- Ability to measure distance between 2 points on the map.

In the past, excavators have indicated difficulties finding or confirming certain critical pieces of information related to their jobsite. JULIE staff believes that this product can assist with

important pieces of information such as county, city or township, section and quarter-section as well as street and cross-street identification, size/length of project and spelling. For more information on IDMs' Map Viewer product for Illinois, contact IDM at 407-539-0644 or visit the Web site at [www.idmtickets.com](http://www.idmtickets.com).

IDMs' Map Viewer is just one of several third-party products identified by JULIE, Inc. as having a potential benefit to JULIE stakeholders. To view other JULIE recognized products, visit the JULIE Web page and select the support/services link.



## FCC DESIGNATES 811 AS NATIONWIDE NUMBER

The Federal Communications Commission (FCC) in March designated 811 as the nationwide number for contractors and others to call before conducting excavation activities. According to the FCC, this nationwide abbreviated dialing code will provide an effective replacement for an array of numbers used across the nation to connect to communication systems operated by underground utility operators and state and local governments.

“Careless digging poses a threat to underground facilities and to people. According to Common Ground Alliance Board Chairman **Paul Preketes**, “There are about 400,000 excavation incidents

each year resulting in substantial damage to facilities and about 50 fatalities. This will help ensure that underground facilities are properly located and marked.”

The Commission ordered that 811 be operational two years from publication of its designation in the Federal Register (April). In the 2002 Pipeline Safety Improvement Act, the federal government strengthened its support for the One Call program by requiring that the DOT and FCC establish a three-digit, nationwide toll-free number to be used by state One Call systems. For a copy of the FCC news release, visit our Web site today.

## LOOKING TO SAVE MONEY?

Do you have e-mail capabilities? Are you still receiving your locate requests via fax? You can save on that budget by changing to e-mail at a savings of 50 cents per message transmission compared to faxed requests. If you receive 500 messages a year, this change could save you \$250 during the next budget period. Depending on your e-mail capabilities, you may even be able to save money on the after hours calls. To discuss the possibility of changing your reception method, contact the Damage Prevention Manager in your area or the Data Department at 815-741-5011.

# EVENT RACES OVER TO JOLIET

The successful Underground Focus Live! Event is racing over to Chicagoland Speedway in Joliet, Illinois. This interactive expo is held in "live, real world working conditions" with over 150 exhibits and demonstrations. The third annual event will be held on July 20-21.

**Michael Connors**, regional administrator for OSHA, will be the keynote speaker. For more details, including a list of CEU qualifying opportunities and free admission for a limited time, visit [www.undergroundfocusevents.com](http://www.undergroundfocusevents.com) or call 866-279-7755.



www.illinois1call.com

## JULIE ON-LINE

Do you have a question about the state law? Not sure about a member code on a locate request ticket? The answers are just a few clicks away. The Web site address is [www.illinois1call.com](http://www.illinois1call.com).

Benefits include:

- State Law and JULIE Policies
- ICC Enforcement Process Link
- Utility Company Contacts
- Free Safety Materials
- Member List
- Upcoming Meetings and Events
- Frequently Asked Questions
- JULIE Board and Staff Directory

Please bookmark this site and visit frequently for the latest news!

GRAPHIC DESIGN BY THE GAMMON GROUP

CHMURA@ILLINOIS1CALL.COM

KEVIN CHMURA, EDITOR, AT 815/774-5000 OR

COMMENTS AND STORY IDEAS SHOULD BE DIRECTED TO

INFORMATIONAL PURPOSES ONLY.

THE CONTENTS IN THIS PUBLICATION ARE FOR

THE JULIE PUBLIC RELATIONS DEPARTMENT.

BREAKING NEW GROUND IS PUBLISHED BY

- **STAKEHOLDERS DIG NEW LAW CHANGES (PG 1)**
- **QUICK DIGS (PG 2)**
- **STUTZMAN ELECTED BOARD PRESIDENT (PG 3)**
- **SAFETY TRAINING APPROVED BY IEPA (PG 4)**
- **IDM MAP VIEWER PRODUCT TAILORED FOR ILLINOIS EXCAVATORS (PG 5)**

The Inside Scoop...

ILLINOIS ONE-CALL SYSTEM

**JULIE**

Call Before You Dig

3275 Executive Dr.  
Joliet, IL 60431

PRSRD STD  
U.S. POSTAGE  
PAID  
JOLIET, IL  
PERMIT NO. 125